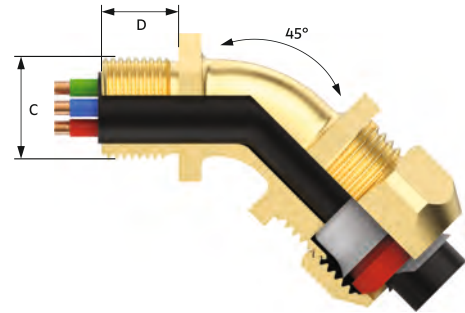
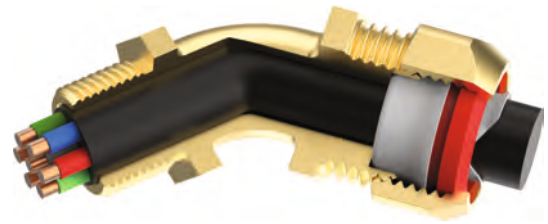


### Liquid Tight Angled Conduit Gland 45°

- Size** : 16mm to 40mm & 3/8" to 1 1/4"  
**Function** : Suitable for all types Liquid Tight Conduit.  
**Protection Class** : IP66/IP67  
**Construction** : Unlike normal conduit glands which have a two piece construction these conduit glands have a four piece construction and use an additional IP Washer to achieve IP66/IP67 protection levels. The additional components inside this gland are ferrule and clamping ring which in combination are able to create an IP66/IP67 protection levels.  
**Operating Temp.** : -60°C to +135°C  
**Material** : Nickle Plated Brass, Stainless Steel 316L  
**Thread** : Metric, NPT  
**Seal Material** : LSOH Silicone Seal



### GLAND SELECTION CHART

Size	Standard Thread Size "C"		Thread Length "D"	Conduit Diameter		Suitable for Conduit Size	Ordering Suffix for Conduit Size
	Metric	NPT		Inner Dia.	Outer Dia.		
16	M16x1.5	3/8"	15.00	12.60	17.80	3/8"	MP10
20	M20x1.5	1/2"	15.00	12.60	17.80	3/8"	MP10
20	M20x1.5	1/2"	15.00	16.00	21.10	1/2"	MP15
25	M25x1.5	3/4"	15.00	21.00	26.40	3/4"	MP20
32	M32x1.5	1"	15.00	26.50	33.10	1"	MP25
40	M40x1.5	1 1/4"	15.00	35.10	41.80	1 1/4"	MP32

### PRODUCT CODE FOR ORDERING PURPOSE

Size	Type	Material	Thread Type	Shroud Type	Accessories	Conduit Size
16	LTA	Brass-1	Standard Metric-11	PVC Shroud-PS	Lock Nut-5	MP10, MP15...
		Stainless Steel-2	Standard NPT-12	LSF Shroud-LS	IP Washer-6	
		Nickel Plated-3				

### ORDERING INFORMATION

**Code:** 16LTA311MP10  
 LTE-16 Nickle plated Liquid Tight Angle Conduit Gland

16 =Gland Size, LTA = Gland Type, 3 =With Nickle Plated Brass Material, 11=With Standard Metric Thread, MP10 = Conduit Size